

# Pickersgill-Kaye Ltd

## Passenger Emergency Egress and Access Devices

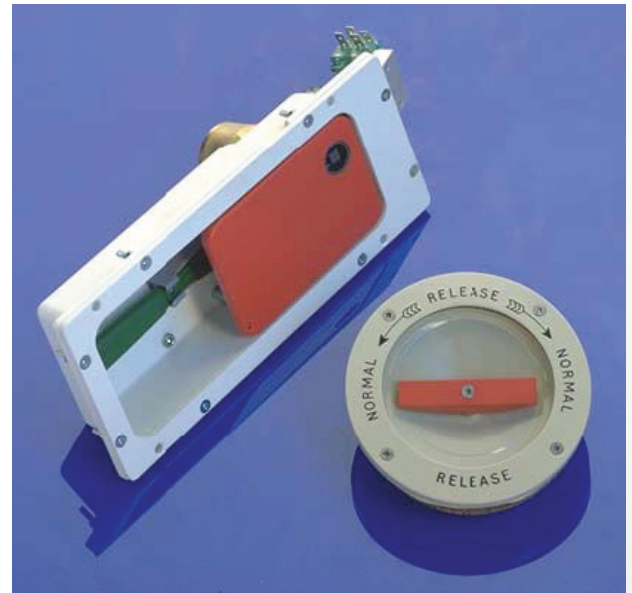


Pickersgill-Kaye has been designing and manufacturing these devices for many years now, starting with a basic handle operated valve for simply exhausting the brakes, through to the more sophisticated emergency talkback units which also provide driver to passenger communication.

These devices are currently fitted on classes 158, 319, 320, 321, 322, 442 and 456, MK3B, MK4 and Nightstock Coaches, Irish Rail multiple units and London Underground's Central, Jubilee and Northern Line Trains. A pull down handle version was also supplied to Westinghouse Brakes Ltd (now Knorr-Bremse) for Virgin Cross Country's trains, built by Bombardier Transportation.

Pickersgill-Kaye have also supplied the emergency egress and access devices to Hitachi for the Javelin trains as well as more recently for the IEP project.

The passenger emergency units comprise of a red handle which when pulled actuates a pneumatic valve or an electrical switch or both simultaneously. This sends a signal back to the driver of an emergency situation and if after a set time the driver fails to respond, the train will automatically stop.



The emergency access devices were supplied as part of the Adtranz, MK3 HST central door locking system. They are located adjacent to the doors on the vehicle bodyside and comprise of a red handle which, when turned through 90°, operates a pneumatic valve thereby disabling the secondary door locking system and allowing the door to be opened.

The handle is mounted in a circular, powder painted, aluminium dish and protected from improper use by an emergency glass. A pull handle version is located inside the vehicle for passenger use.



### Pickersgill-Kaye Ltd

Pepper Road, Leeds, LS10 2PP Tel: 0113 277 5531  
sales@pkaye.co.uk www.pkaye.co.uk

Pickersgill-Kaye is an ASSA ABLOY group company



© 2016 Pickersgill-Kaye Limited